

HOLE REPAIR STEPS

CHECK WITH THE SOAP TO LOCATE THE LEAK. 1

**MARK THE LEAK WITH THE CORRECT AIRTRACK PATCH. 2
IT SHOULD AT LEAST COVER AN EXTRA 1CM AROUND
THE LEAK.**

**CLEAN THE AIRTRACK PATCH AS WELL AS THE SPOT 3
AROUND THE LEAK WITH THE ALCOHOL PATCH.**

**RUB THE AIRTRACK PATCH AS WELL AS THE SPOT 4
AROUND THE LEAK WITH GLUE AND LET IT DRY FOR 5
MINUTES.**

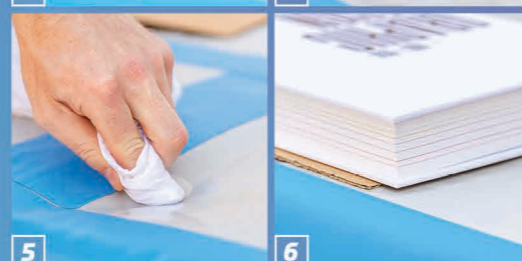
**PUT THE GLUED AIRTRACK PATCH ON THE LEAK, AND 5
PRESS FIRMLY, REMOVE ANY EXCESS GLUE WITH A PIECE
OF CLOTH.**

**PUT A PIECE OF CARTON ON THE AIRTRACK PATCH WITH 6
A HEAVY OBJECT AND WAIT 24 HOURS WITHOUT
MOVING IT.**

CHECK WITH THE SOAP IF THE LEAK IS FIXED. 7

NECESSITIES

- GLUE (INCLUDED)
- AIRTRACK MATERIAL (INCLUDED)
- ALCOHOL PATCH (INCLUDED)
- SOAP (EXCLUDED)
- PENCIL (EXCLUDED)
- (OPTIONAL) MASKING TAPE (EXCLUDED)
- OLD CLOTH (EXCLUDED)
- PIECE OF CARTON (EXCLUDED)
- HEAVY OBJECT (EXCLUDED)



VIDEO-TUTORIAL

SEAM REPAIR STEPS

1 CHECK WITH THE SOAP WHERE THE LEAK IS LOCATED.

**2 OPEN (IF NECESSARY) THE SEAM CAREFULLY WITH THE
SCREWDRIVER.**

**3 TAPE THE AIRTRACK WITH THE MASKING TAPE TO
PREVENT GLUE LEAKING OR SCRATCHING THE AIRTRACK
WITH YOUR SCREWDRIVER.**

**4 CLEAN THE SEAM AND THE AREA YOU'RE GOING TO
GLUE, WITH THE ALCOHOL PATCH.**

**5 PUT GLUE ON THE END OF THE SCREWDRIVER AND FILL
THE SEAM. WAIT 5 MINUTES TO LET THE GLUE DRY
BEFORE APPLYING PRESSURE.**

**6 PUT PRESSURE ON THE SEAM AND REMOVE ANY EXCESS
OF GLUE WITH THE CLOTH.**

**7 PUT A PIECE OF CARTON ON THE AIRTRACK PATCH WITH
A HEAVY OBJECT AND WAIT 24 HOURS WITHOUT
MOVING IT.**

8 CHECK WITH THE SOAP IF THE LEAK IS FIXED.

NECESSITIES

- GLUE (INCLUDED)
- ALCOHOL PATCH (INCLUDED)
- SOAP (EXCLUDED)
- (OPTIONAL) MASKING TAPE (EXCLUDED)
- OLD CLOTH (EXCLUDED)
- OLD FLAT SCREWDRIVER (EXCLUDED)